

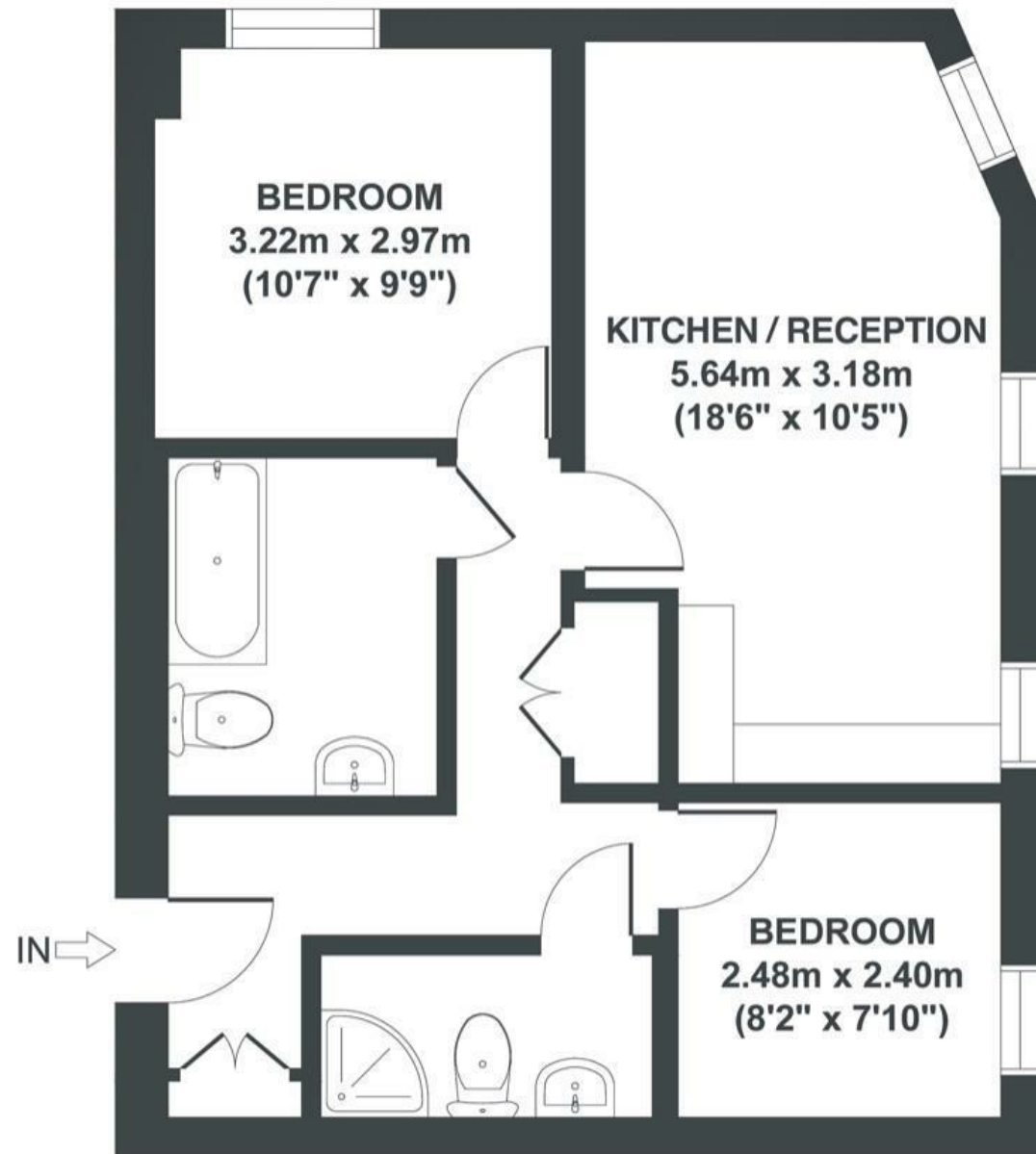
**Boardwalk**

# Coleridge Court

B E D M I N S T E R

APPROXIMATE FLOOR AREA  
48 SQM / 517 SQFT

BOOK A VIEWING  
01179 898 222  
[hello@boardwalkpropertyco.com](mailto:hello@boardwalkpropertyco.com)



## SECOND FLOOR

Illustrations are for reference purposes only, measurements are approximate, not to scale.

Boardwalk

# Stanley Street , BRISTOL



£210,000



2 Bedrooms



Bristol, BS3



2 Bathrooms

3 AN

*"Living in this lively area has suited my lifestyle for its convenience and variety of offerings. Nearby is North Street with its bars and eateries, The Southville Deli, The North Street Cheese Shop and more. Just down the road there's a specialist cycle workshop and a number of eco and local handicraft type shops which are good for browsing. Within walking distance are a few small supermarkets and a large Asda - and an excellent fish and chip shop two blocks down! Windmill Hill City farm nearby is a lovely place to have a coffee, talk to the animals and admire the allotment. There are quite a few parks and green areas dotted around. I like to travel and the flat connects easily to the city. There are also direct buses to the local university, the railway station and the airport. The flat itself, with the second bedroom and bathroom is ideal for having friends and family to stay."*

